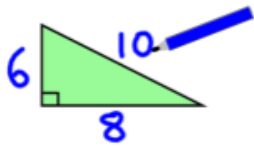


Teaching  
with  
SMARTBoard



# Episode 39

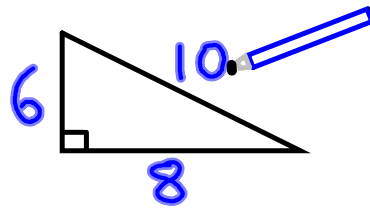
Geometry

Applications 1

*Hosted by Scott Miller*

*and David Sladkey*

# Teaching with SMARTBoard



<http://www.ncusd203.org/central/html/what/math/smartboard/>

itunes

**TEACHER TUBE**

<http://smartboard.libsyn.com>

[smiller@naperville203.org](mailto:smiller@naperville203.org)  
[dsladkey@naperville203.org](mailto:dsladkey@naperville203.org)

Naperville Central High School  
Naperville Community Unit School District 203  
Naperville IL



<http://www.idcide.com/i/mc2/il/naperville.gif>

<http://www.dreamstarterhomes.com/images/naperville.gif>



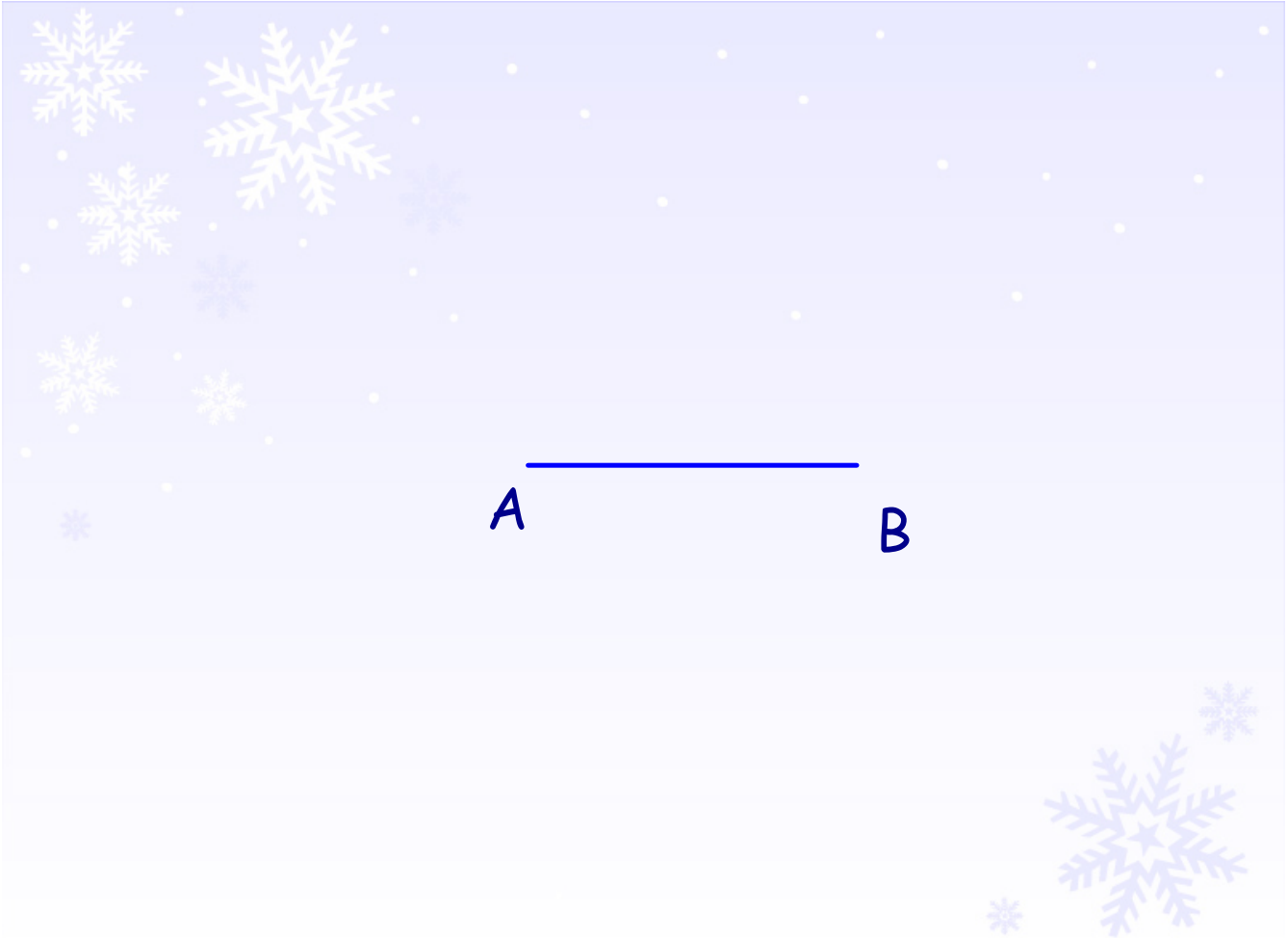
<http://www.ben.edu/programs/MEPI/Naperville.jpg>

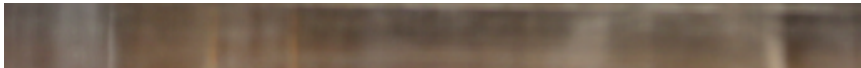


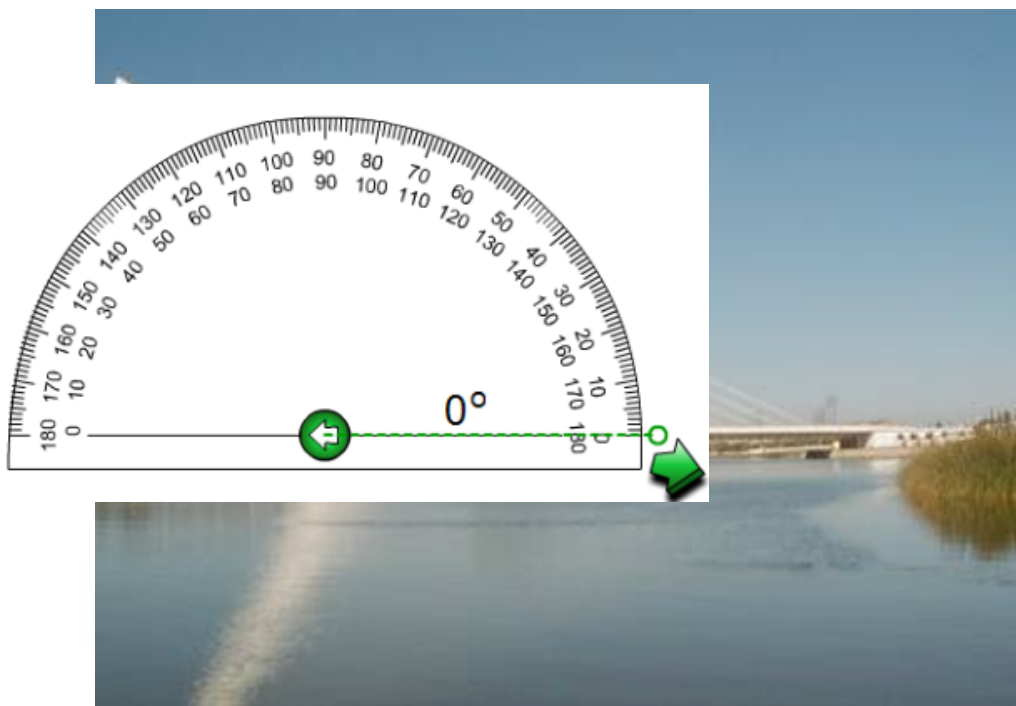
# **# 39      Teaching with Smartboard**

Using Geometry Tools

Making Geometric Figures &  
Transformations

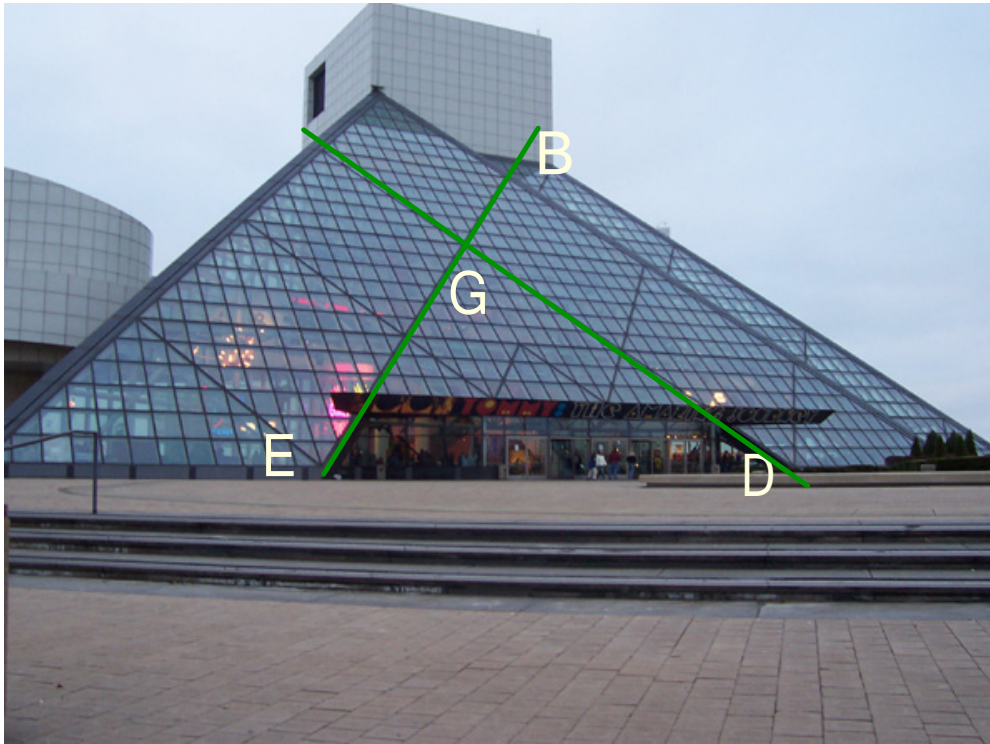






Find the measure of the angle of the bridge and its supplement



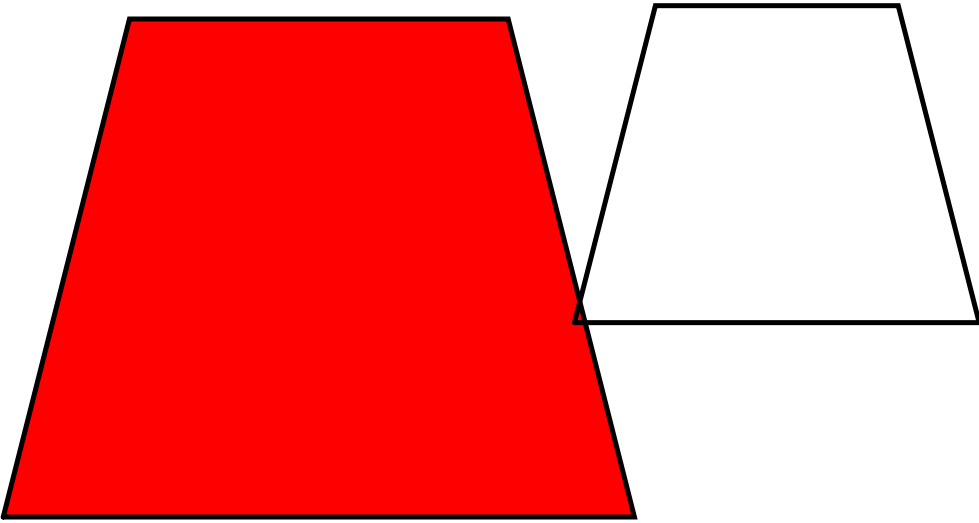


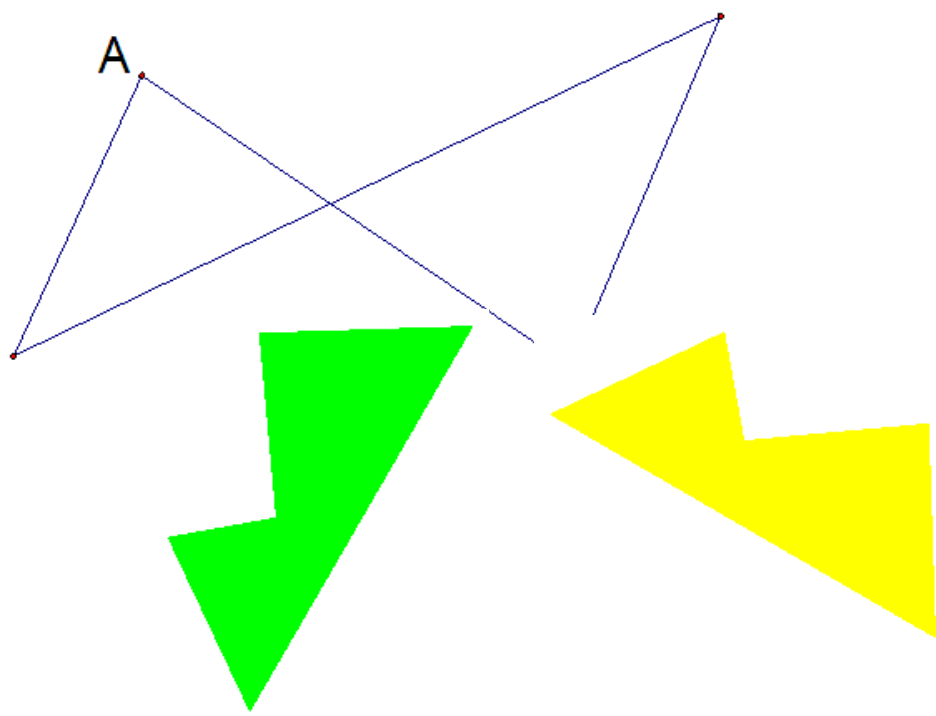
Identify as many angle pairs as possible

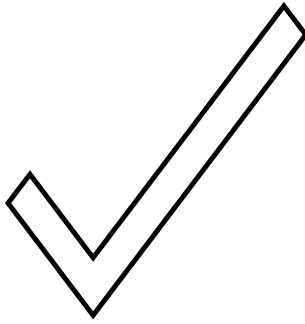
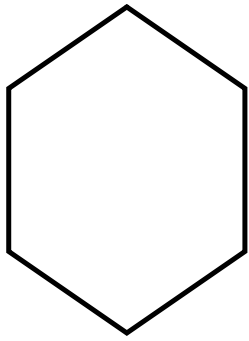


**Did you hear the new statistics joke?  
Probably**

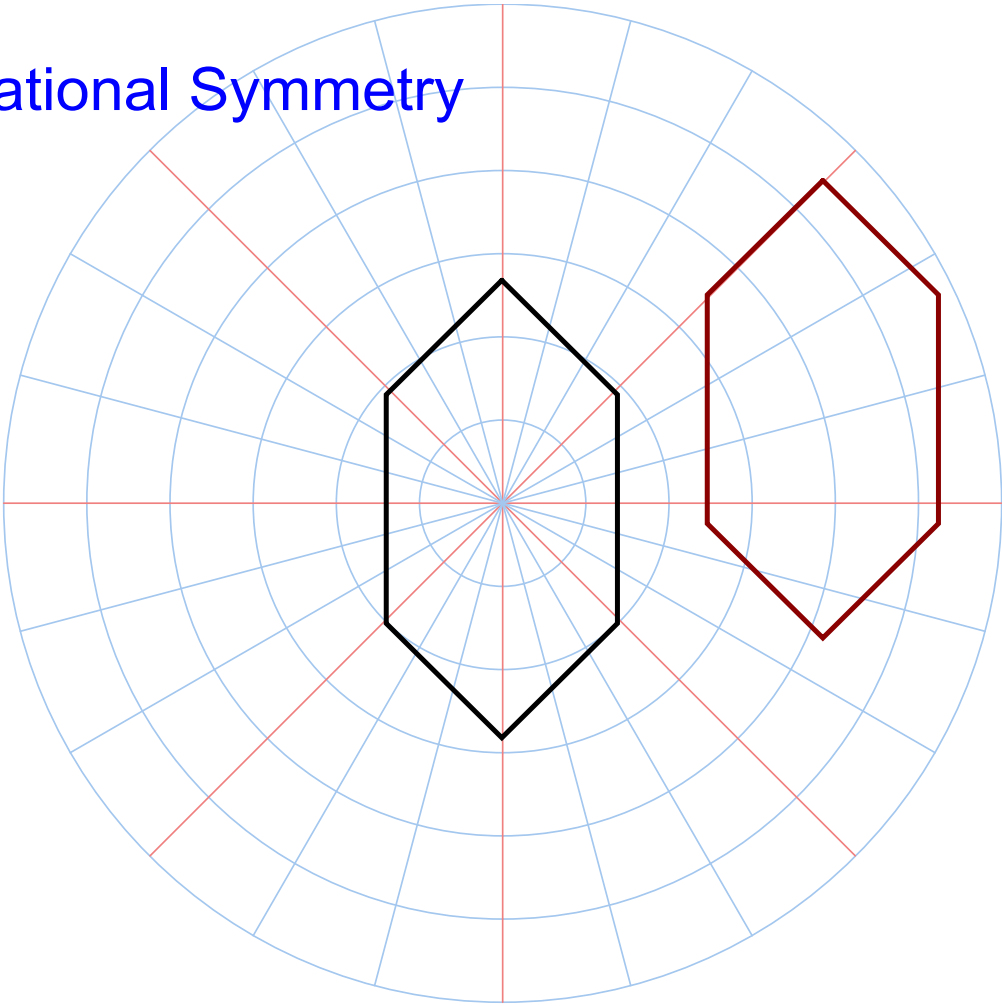
<http://golum.riv.csu.edu.au/~sbuckley/maths/funpage/jokes1.htm>

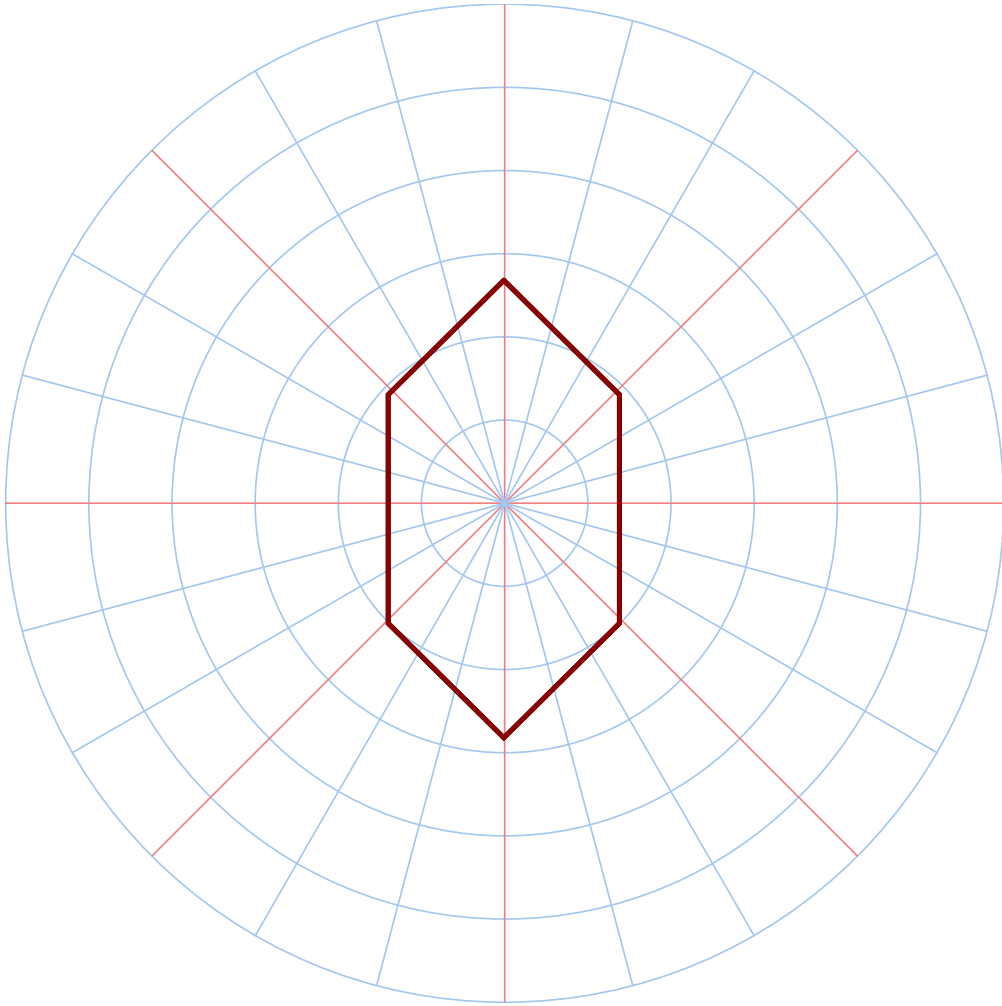






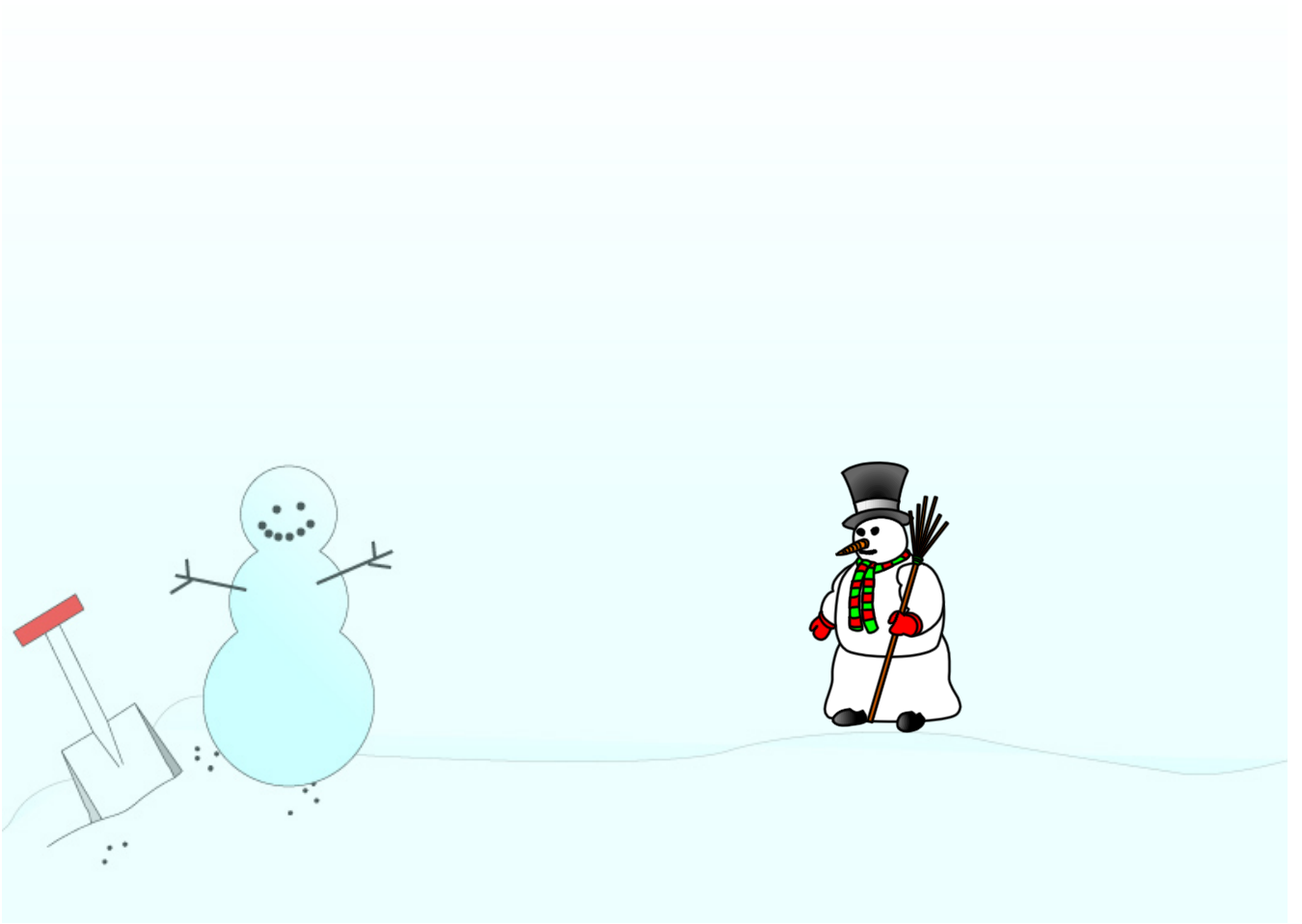
# Rotational Symmetry











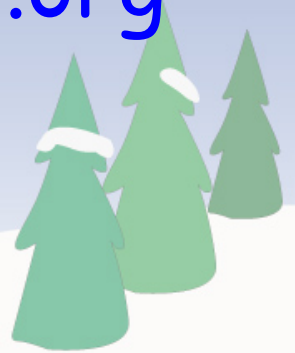
**Greeting~**

**I love your podcasts!! Thank you!! I have learned so much.**

**Renee Gardner  
Miami Beach Senior High School**



[dsladkey@naperville203.org](mailto:dsladkey@naperville203.org)  
[smiller@naperville203.org](mailto:smiller@naperville203.org)



## Attachments

---

Transformations.gsp

sample.gsp